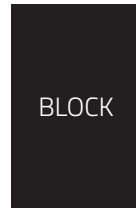
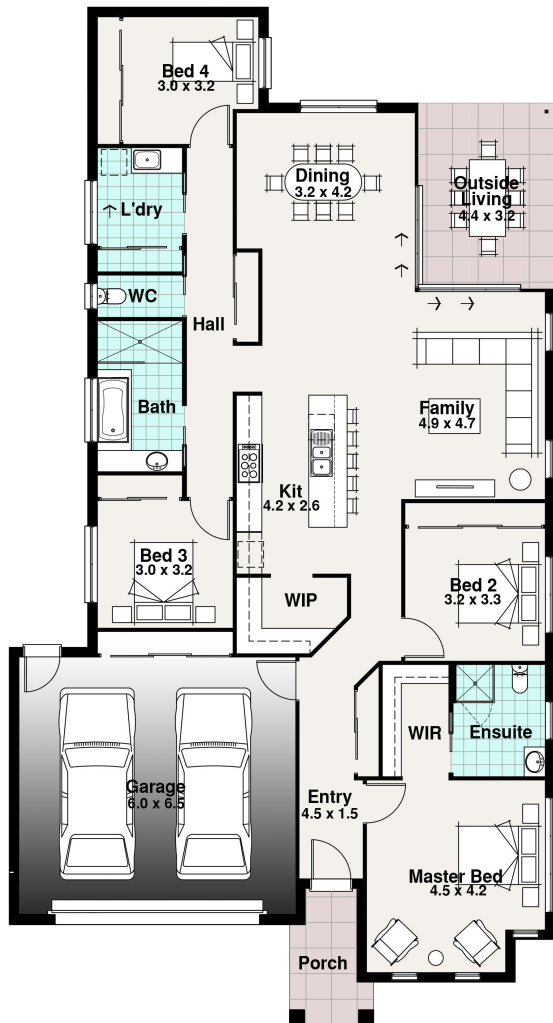




# Family Range



BLOCK 32.00m

14.50m

- 4
- 2
- 2
- 1



## The Sarah 26

Width 12.79m Length 23.87m

|                |                  |
|----------------|------------------|
| Residence      | 177.22 m2        |
| Garage         | 45.64 m2         |
| Outside Living | 13.92 m2         |
| Porch          | 5.13 m2          |
| <b>TOTAL</b>   | <b>241.92 m2</b> |
|                | <b>26.03 sq</b>  |

### The Sarah

The Sarah was the first Adaptable Living Home created as part of the IBN range of homes and features a bit of everything. 4 bedrooms, 2 bathrooms, a living area, big kitchen featuring a walk in pantry, outside living & a spacious garage.

Block sizes are estimates only and based on standard Developer setback and Rescode setback of 4 - 5m front only and 3m rear setback. Plans, facades and specifications vary depending on zone and region. All designs are priced to the traditional facade associated with the range, all other facades are considered upgrades and will incur charges unless otherwise specified.